

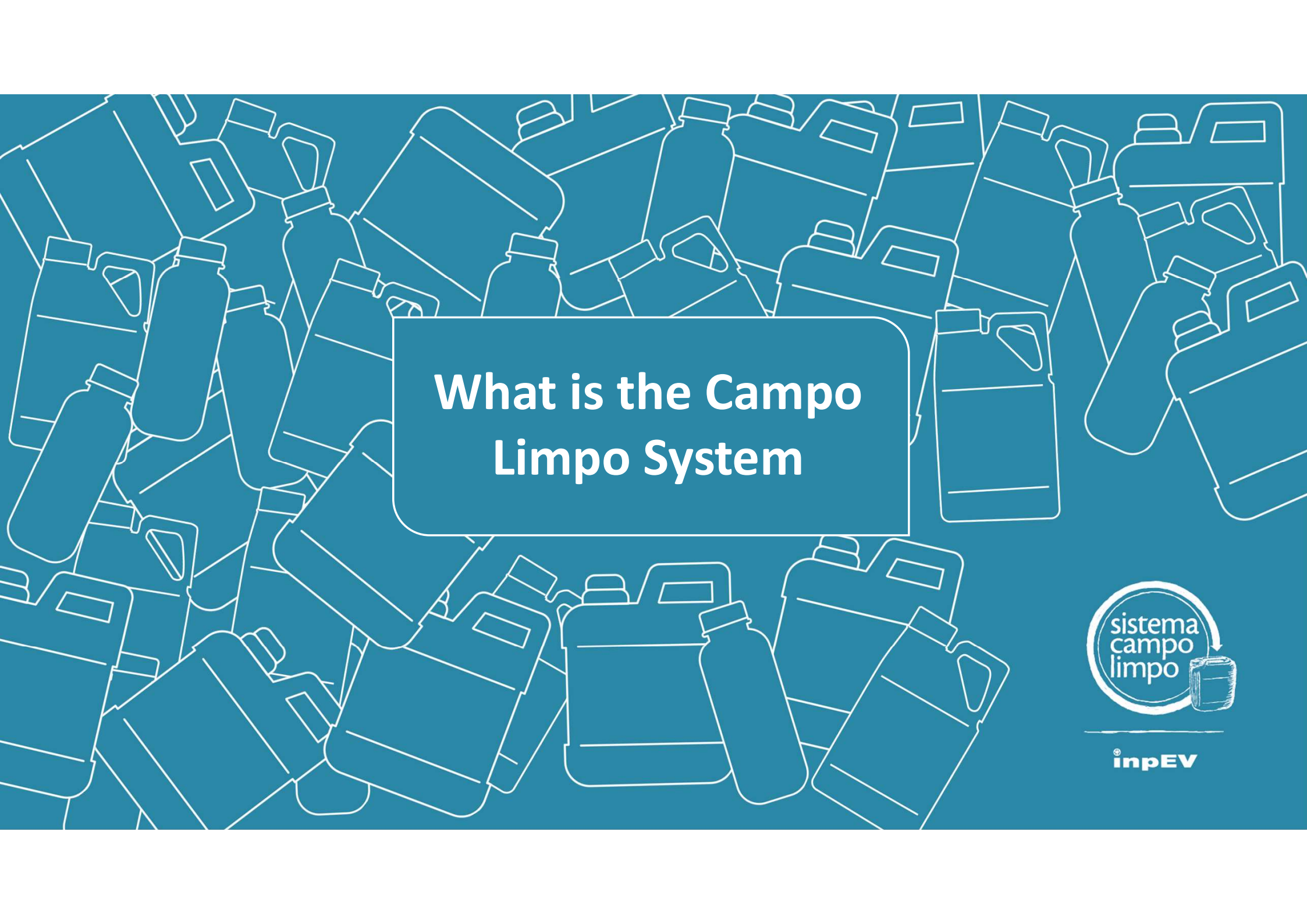
Campo Limpo System

Leadership role and impact

March/2022



inpEV

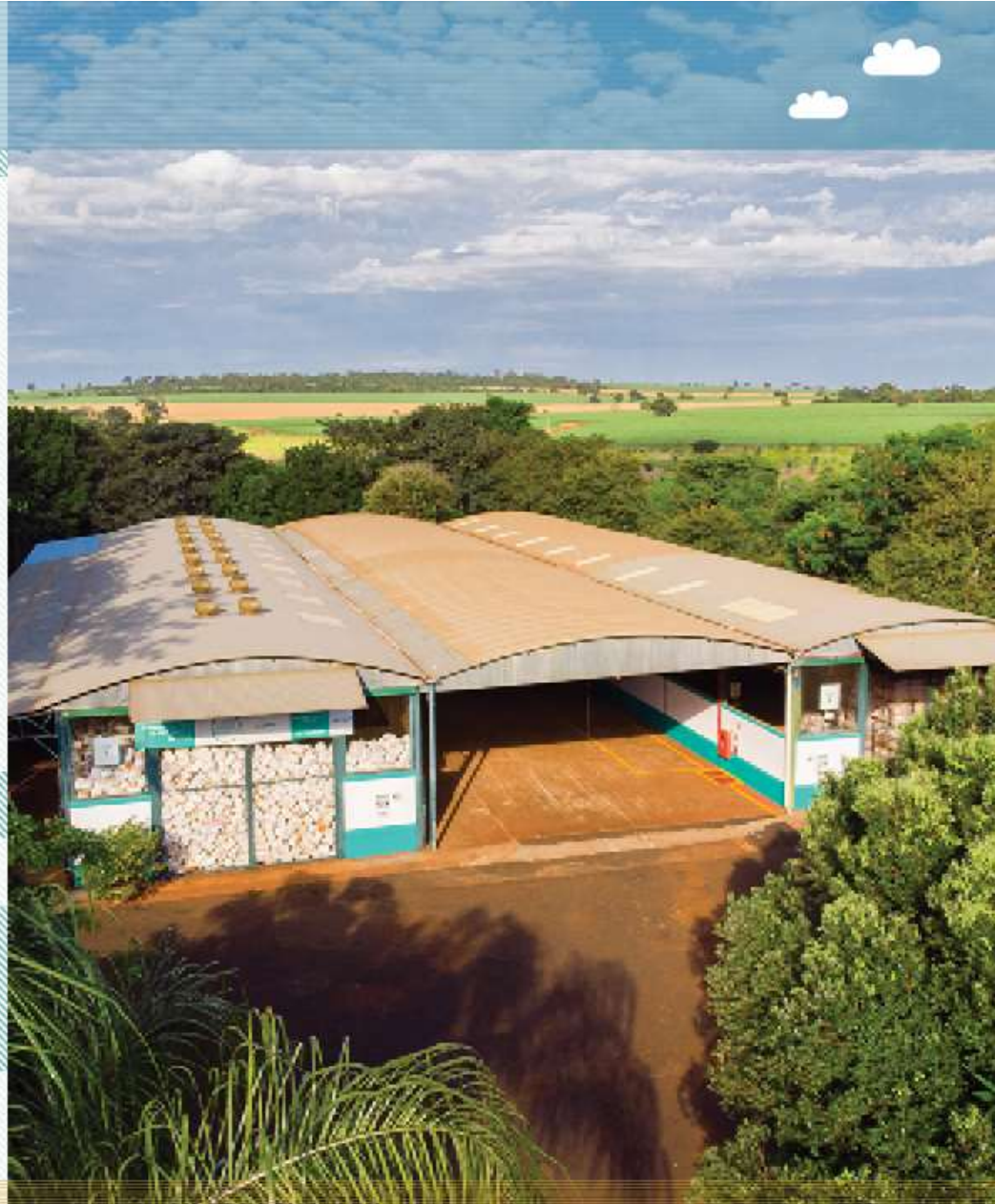


What is the Campo Limpo System



inpEV

Campo Limpo System is the Brazilian reverse logistics program for empty crop protection packaging and post-consumption crop protection leftovers.



**It is managed
by inpEV**

(National Institute for
Processing Empty
Packages).

inpEV



Managing entity: inpEV



inpEV

inpEV

- Created in 2001 to represent the industry, it started its operations in 2002
- Non-profit entity
- Integrated management of the System: efficiency and continuous improvement of processes



Affiliated Members

+ 150

manufacturing companies,
importers and registrants

10

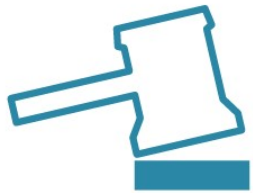
entities representing
agribusiness



Governance structure



Foundations



Legal



Integration



**Education and
awareness**



**Governance
Processes &
technology**



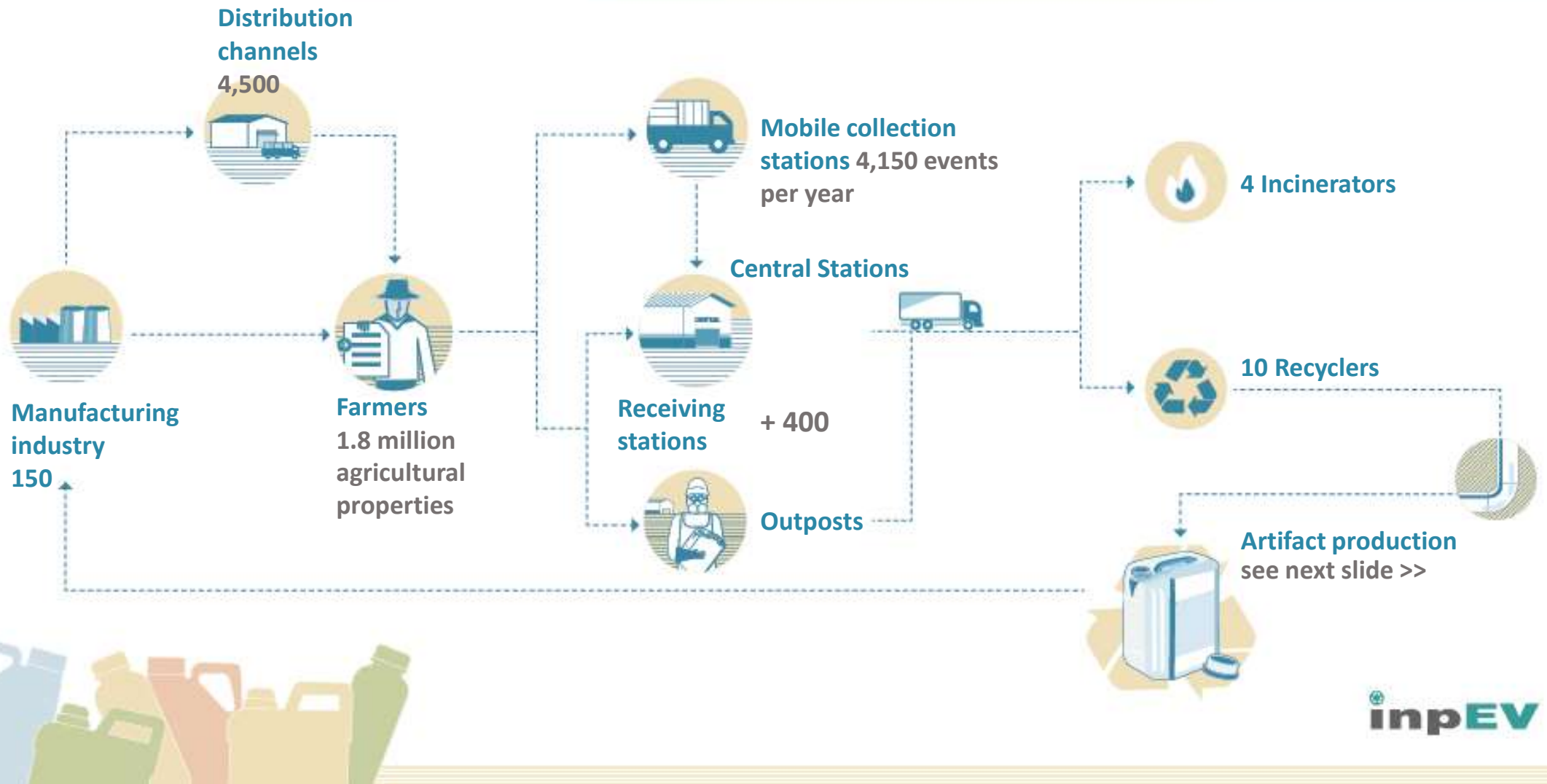


How it works



inpEV

System Flow Diagram

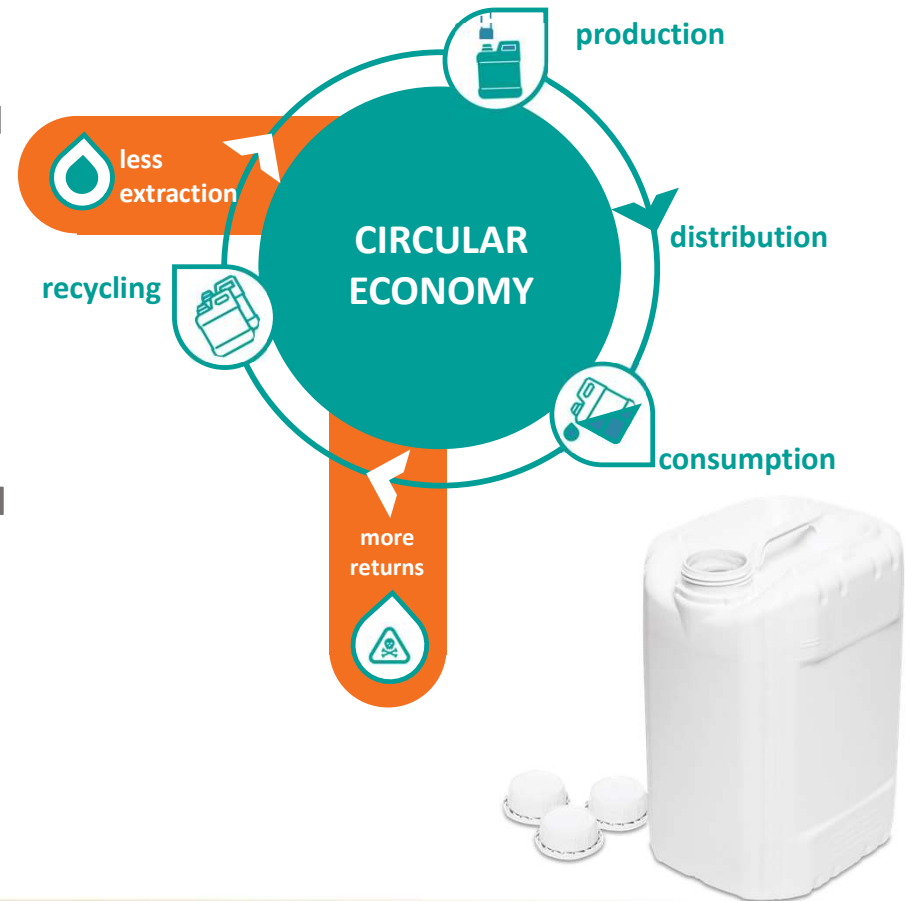


Recycled Products

33 certified artifacts,
which service
various sectors

Examples:

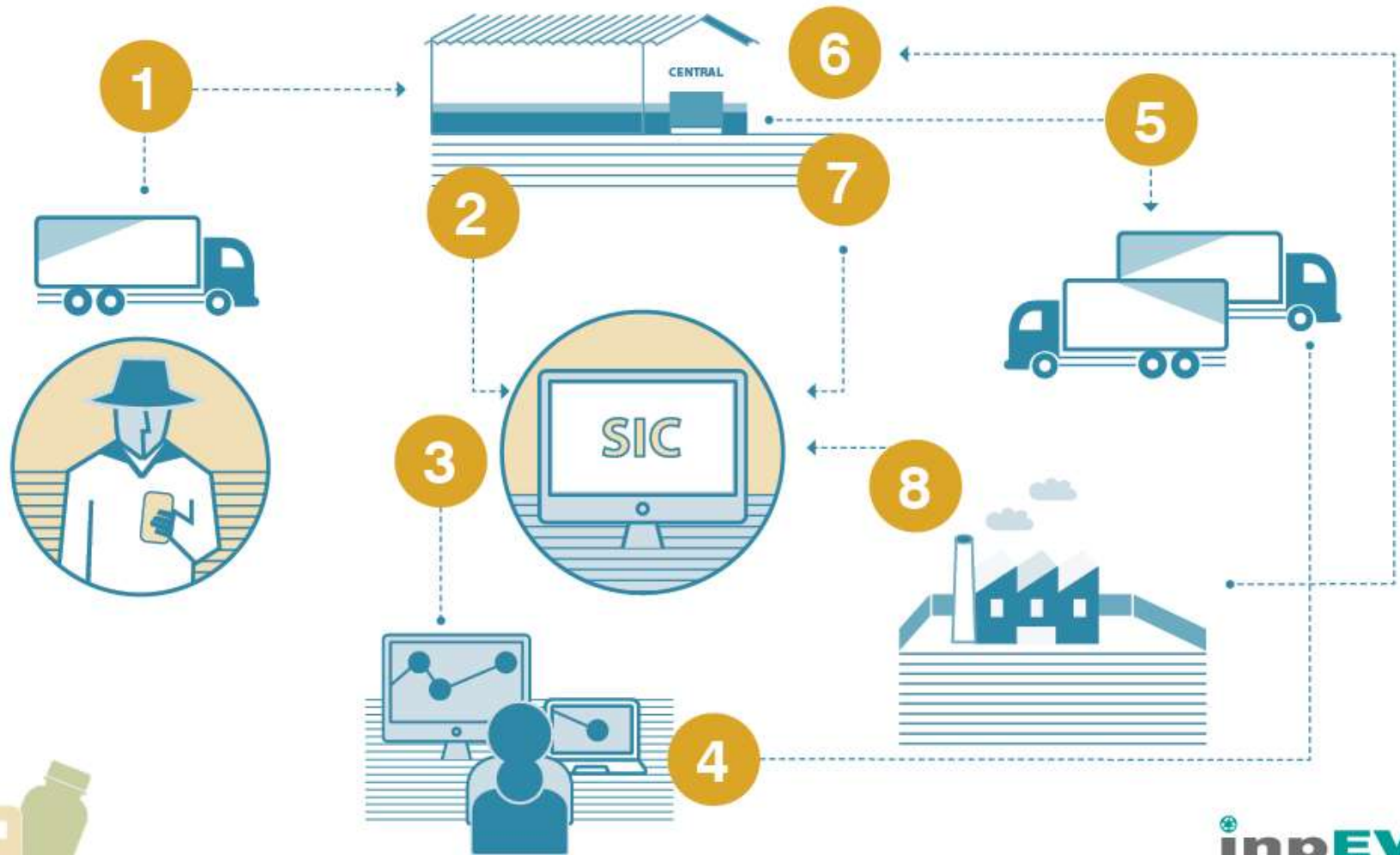
- Civil construction: **corrugated ducts & sewage piping**
- Transportation: **battery box, railroad sleepers and sign posts**
- Energy sector: **cross-arms for poles**
- Furniture industry: **cardboard molds** for furniture and industrial protection
- Crop protection: **containers** (Ecoplástica®) and **caps** (Ecocap®)



Traceability and chain of custody



Traceability is a pillar of the System since its inception



Value generation – ESG



Environmental

- ✓ Reduction of inadequate disposal risks
- ✓ Eco-efficiency
- ✓ Circular economy



Social

- ✓ Environmental education: PEA, EAD
- ✓ National Clean Field Day (DNCL - Dia Nacional do Campo Limpo)
- ✓ Economic leveraging through recycling
- ✓ Job creation



Governance

- ✓ Accountability and transparency: Financial Statements, Sustainability Report
- ✓ Principles: Code of Conduct, By-Laws
- ✓ Corporate responsibility: external commitments (SDGs, Global Compact)



Results and impacts



inpEV

2002–2021 balance

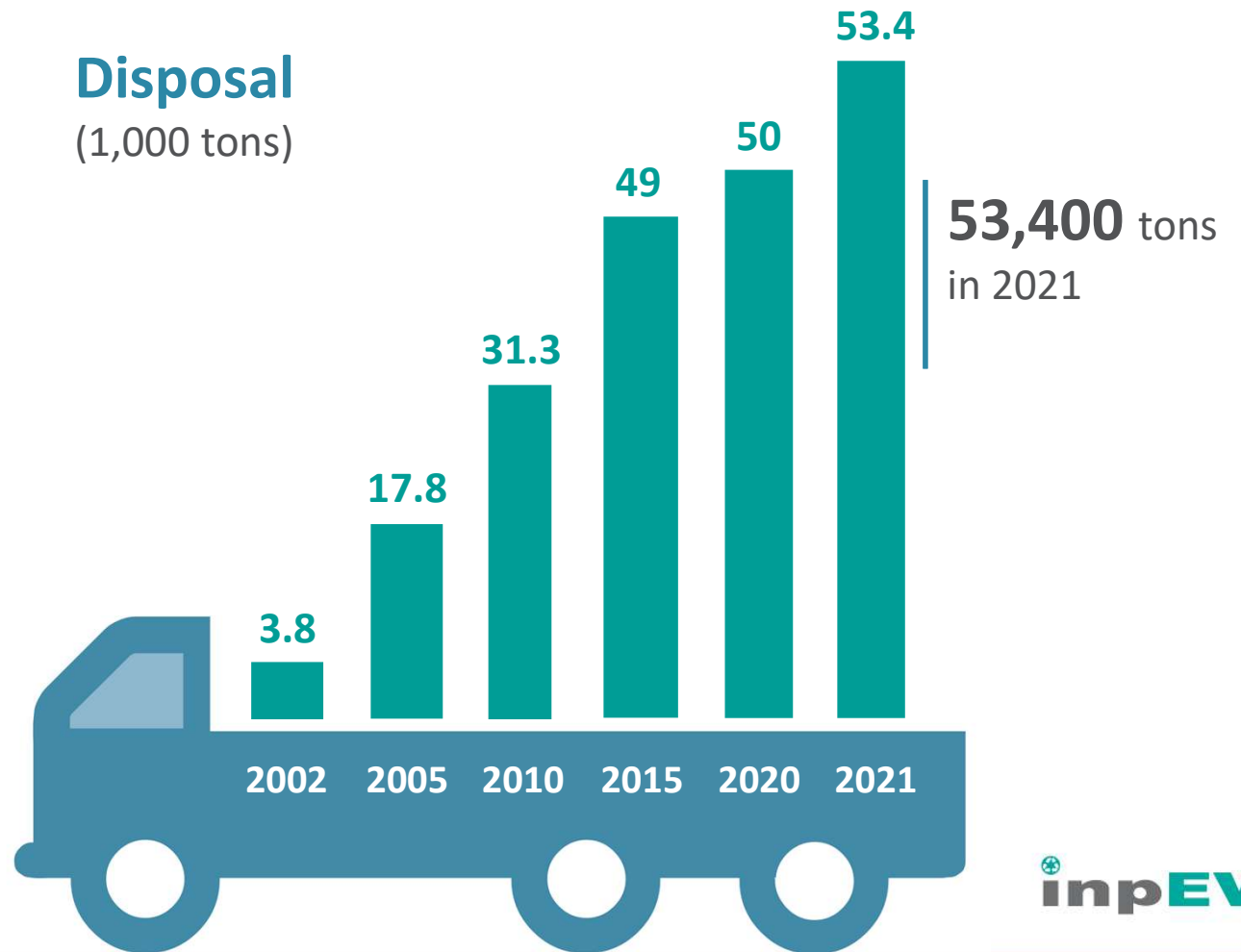
650,000 tons
of empty packaging

94% of primary plastic jugs

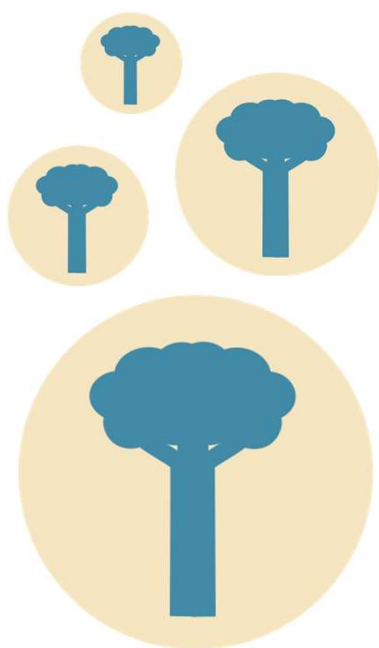
80% of total shipped
to market



Disposal (1,000 tons)



Care with the planet and future generations



**899,000 tons of
CO₂e avoided**

**=
the carbon
sequestered by 6.5
million trees**



36,000,000 GJ
(avoided
power consumption)

**=
the supply
of 5.2 million
houses during
one year**



Source: Eco-efficiency Study of the Espaço Eco Foundation based on the impacts avoided by the System when maintaining the recycled packaging within the productive cycle and ensuring environmentally friendly disposal of the non-recyclable waste. Period: March, 2002 to March, 2021.

Thank you!

www.inpev.org.br



inpEV